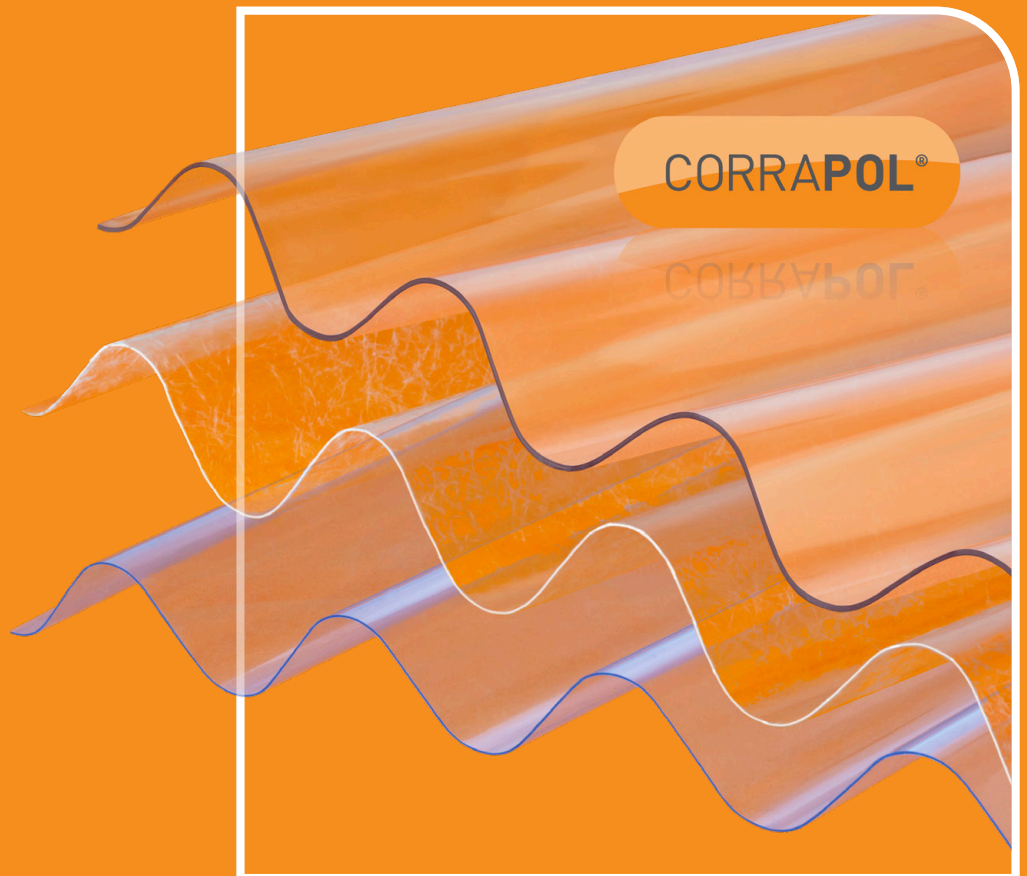


CORRAPOL®

Clear Corrugated Sheet Ranges Technical Guide



Clear Corrugated Sheet Ranges

The Corrapol® clear corrugated sheet range is manufactured for a wide variety of applications and offers different extrusions for varying lifespan and budget requirements.

Corrapol® Stormproof offers a high-quality, durable corrugated roof glazing solution, whilst the Corrapol® DIY grade provides a more cost effective option. This brochure provides a guide as to the range and specific benefits of each extrusion type which we manufacture, along with some technical data.



Common uses:

- ✓ Carports
- ✓ Greenhouses
- ✓ Canopies
- ✓ Shelters
- ✓ Verandas
- ✓ Covered walkways
- ✓ Swimming pools
- ✓ Factory partitions
- ✓ Cold frames

Qualities:

- ✓ Suitable for all budgets
- ✓ High-quality flashing and accessories
- ✓ Easy to install
- ✓ Universal Corrapol® profile



Corrapol® : Example Apex Roof Construction

Below is a typical apex roof showing how the Corrapol® system components are installed together for perfect results. The same methods and components can be used in most applications from lean-to roofs, carports, decking pergolas, BBQ shelters and other constructions.



Refer to the *Corrapol® Installation Guide*

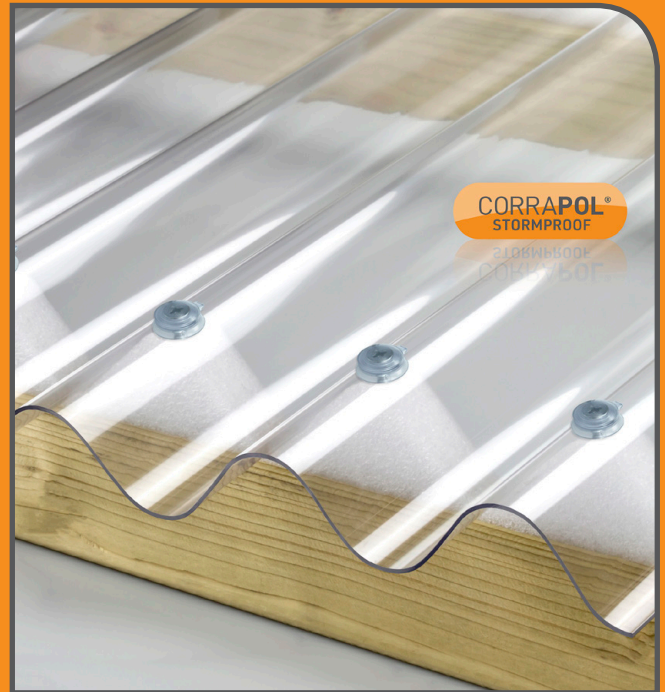
Corrapol® Stormproof® : Low and High Profiles

Corrapol® Stormproof® sheets are the strongest and most durable within the Corrapol® range. Extruded from virtually unbreakable plastic resin Corrapol® Stormproof® clear sheets offer superior strength, excellent clarity and above all unrivaled weather resistance, giving them an exceptional long service life. Thanks to this superior strength and longevity, Corrapol® Stormproof® clear sheets will not go yellow or become brittle over time, and nor do they crack during installation, unlike cheaper PVC alternatives.

Corrapol® Stormproof® clear sheets are made from resin that makes them 200 times stronger than glass of the same thickness which is generally considered to be virtually unbreakable and what we call 'Stormproof®'. The UV protection layer integrated into the manufacturing process of Corrapol® Stormproof® sheets ensuring they provide superior light transmission for many years to come.

Key Benefits:

- ✓ Maintains great light transmission
- ✓ UV protected
- ✓ High impact strength
- ✓ Virtually unbreakable
- ✓ Estimated 25 year lifespan
- ✓ Doesn't discolours like cheaper alternatives
- ✓ Doesn't crack when fixing like PVC



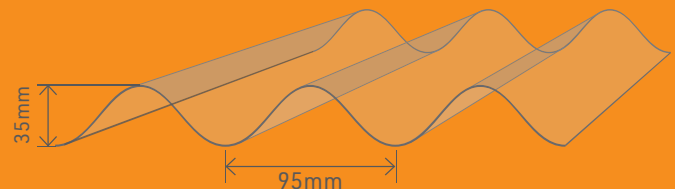
Corrapol® Stormproof® : High Profile Sheets

Most Popular: Compatible with Rock N Lock® & Super Ridge

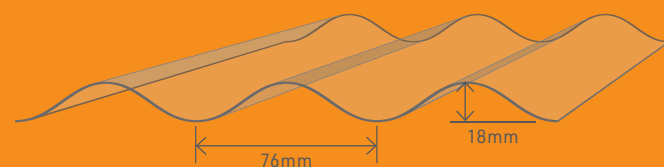
Common Uses:

- ✓ Carports
- ✓ Canopies
- ✓ Cold frames
- ✓ Porches
- ✓ Greenhouses
- ✓ Agricultural buildings/barns
- ✓ Garages
- ✓ Covered equestrian areas

Corrapol® Stormproof® : High Profile Sheets	Code
Corrapol® Stormproof® High Profile Sheet - 950 x 1000mm	AC801
Corrapol® Stormproof® High Profile Sheet - 950 x 2000mm	AC802
Corrapol® Stormproof® High Profile Sheet - 950 x 2500mm	AC804
Corrapol® Stormproof® High Profile Sheet - 950 x 3000mm	AC806
Corrapol® Stormproof® High Profile Sheet - 950 x 4000mm	AC808



Corrapol® Stormproof® : Low Profile Sheets



Corrapol® Stormproof® : Low Profile Sheets	Code
Corrapol® Stormproof® Low Profile Sheet - 840 X 1830mm	AC19
Corrapol® Stormproof® Low Profile Sheet - 840 X 2440mm	AC20
Corrapol® Stormproof® Low Profile Sheet - 840 X 3050mm	AC21
Corrapol® Stormproof® Low Profile Sheet - 840 X 3660mm	AC22

Corrapol®-PVC : DIY Grade Sheets

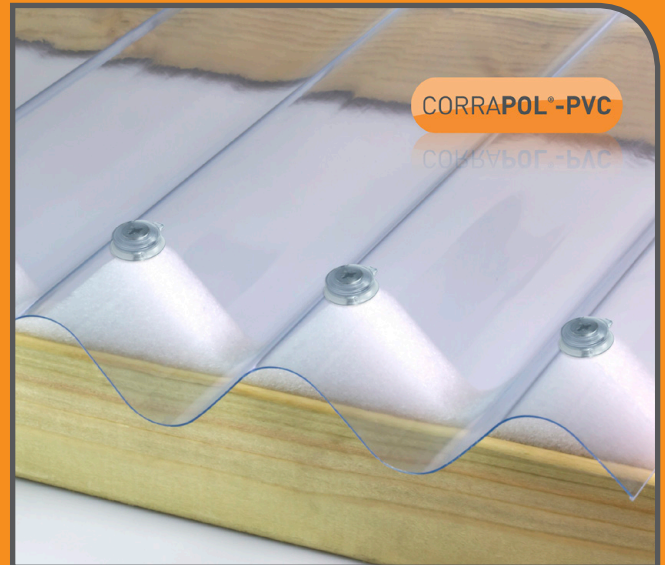
Whilst not as strong or as long lasting as the Corrapol® Stormproof range, Corrapol®-PVC DIY Grade sheets offer a lower cost and are ideal for areas where impact resistance is not important and also where direct sunlight is limited. In areas like this, the Corrapol®-PVC DIY Grade range provides an excellent solution and will provide an excellent waterproof solution with good light transmission.

Key Benefits:

- ✓ Low cost
- ✓ Maintains great light transmission
- ✓ Allows a degree of visibility whilst retaining privacy
- ✓ Lightweight
- ✓ Ideal for DIY

Common Uses:

- ✓ DIY Projects
- ✓ Lean-tos



Corrapol®-PVC: DIY Grade High Profile Sheet	Code
Corrapol®-PVC DIY Grade Sheet - 950 X 1000mm	AC700
Corrapol®-PVC DIY Grade Sheet - 950 X 2000mm	AC702
Corrapol®-PVC DIY Grade Sheet - 950 X 2500mm	AC704
Corrapol®-PVC DIY Grade Sheet - 950 X 3000mm	AC706

Corrapol®-GRP : Polyester Translucent Sheets

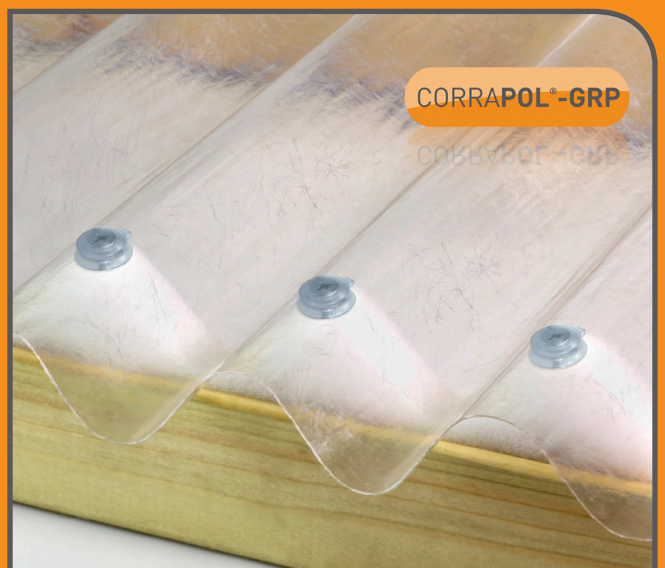
This type of Corrapol® provides excellent strength, similar to that of the Corrapol® Stormproof range, however the light transmission is lower due to the fibers in the resin mix. Where areas where direct sunlight is relatively low, the Corrapol®-GRP translucent sheets are an excellent solution with high impact strength and excellent rigidity.

Key Benefits:

- ✓ Provides privacy
- ✓ Maintains great light transmission
- ✓ Allows a degree of visibility whilst retaining privacy
- ✓ High strength
- ✓ High rigidity

Common Uses:

- ✓ Agricultural buildings/barns
- ✓ Garages



Corrapol®-GRP : Polyester High Profile Sheet	Code
Corrapol®-GRP Polyester Sheet - 950 X 2000mm	AC602

Corrapol® : Rock N Lock® Gable Flashing

The Corrapol® Rock N Lock® Gable Flashing is a world first that makes it easy to complete one of the most challenging stages of any roofing project: finishing the gable.

This system, which is patent-pending and design-registered, allows users to quickly and easily create a robust and durable gable flashing at the gable end of any Corrapol® roof, thanks to an easy-to-use Rock N Lock® system.



Mill



CORRAPOL®

Corrapol® : Rock N Lock® Gable Flashing	Code
Corrapol® Rock N Lock® Gable Flashing - Mill - 2m	AC220M
Corrapol® Rock N Lock® Gable Flashing - Mill - 3m	AC222M
Corrapol® Rock N Lock® Gable Flashing - Mill - 6m	AC228M
Corrapol® Rock N Lock® Gable Flashing - White - 2m	AC220WH
Corrapol® Rock N Lock® Gable Flashing - White - 3m	AC222WH
Corrapol® Rock N Lock® Gable Flashing - White - 6m	AC228WH



White



CORRAPOL®

Corrapol® : Rock N Lock® Wall Flashing

The all new Corrapol® Rock N Lock® Wall Flashing is another world first that we have developed to help installers complete a roof's edge where they meet a wall.

Enabling users to quickly and easily create a robust and long-lasting wall flashing, this patent-pending and registered design makes it easy to secure and waterproof the wall end of any Corrapol® roof. Thanks to the exclusive Rock N Lock® fastening system, the Corrapol® Rock N Lock® Wall Flashing locks into place to provide an extra level of waterproofing.



Mill



CORRAPOL®

Corrapol® : Rock N Lock® Wall Flashing	Code
Corrapol® Rock N Lock® Wall Flashing - Mill - 2m	AC420M
Corrapol® Rock N Lock® Wall Flashing - Mill - 3m	AC422M
Corrapol® Rock N Lock® Wall Flashing - Mill - 6m	AC428M
Corrapol® Rock N Lock® Wall Flashing - White - 2m	AC420WH
Corrapol® Rock N Lock® Wall Flashing - White - 3m	AC422WH
Corrapol® Rock N Lock® Wall Flashing - White - 6m	AC428WH



White



CORRAPOL®

Corrapol® : Aluminium Super Ridge

Available in white and mill finish, the Corrapol® aluminium Super Ridge is another game changer in the corrugated roofing market. Protecting a roof's ridge is essential, and installing of the Corrapol® Super Ridge you can extend the life of your roof by several years.

Designed with integrated pre-formed foam gaskets to fit the corrugations of the Corrapol® sheets, the Corrapol® Super Ridge is an installer's dream. The patented design allows for a good variety of roof pitches with the gaskets being flexible enough to seal against the Corrapol® sheets, and create a longer lasting superior ridge solution.

Corrapol® : Aluminium Super Ridge	Code
Corrapol® Aluminium Super Ridge Set - Mill - 2m	AC330M
Corrapol® Aluminium Super Ridge Set - Mill - 3m	AC332M
Corrapol® Aluminium Super Ridge Set - Mill - 6m	AC338M
Corrapol® Aluminium Super Ridge Set - White - 2m	AC330WH
Corrapol® Aluminium Super Ridge Set - White - 3m	AC332WH
Corrapol® Aluminium Super Ridge Set - White - 6m	AC338WH



Mill



White

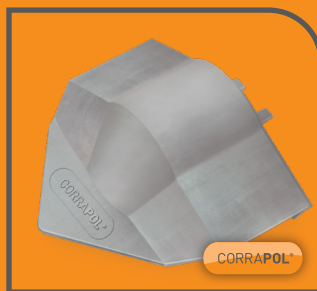


Corrapol® : Aluminium Super Ridge End Cap

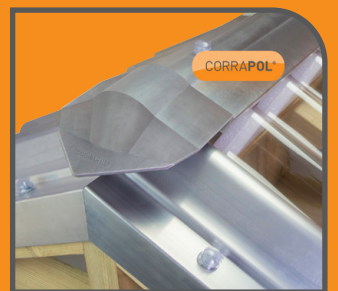
With its distinctive shape, our Corrapol® Super Ridge End Cap is designed to be the crowning feature to any Corrapol® corrugated ridged roof. Designed to add new level of waterproofing to the end of a Corrapol® Super Ridge, the Super Ridge End Cap helps protect one of the most crucial areas of the installation and provides an unrivalled finish to user's roofs.

Made from aluminium, the Corrapol® super ridge end cap is highly durable and significantly extends the roof's lifespan. Its simple and innovative positioning tabs ensure quick and easy installation for both DIYers and installers alike.

Corrapol® : Aluminium Super Ridge End Cap	Code
Corrapol® Super Ridge End Cap - Mill	AC340M
Corrapol® Super Ridge End Cap - White	AC340WH



Mill



White



Corrapol® : Aluminium Top Wall Flashing

Our Corrapol® Top Wall Flashing is another innovation designed to simplify installation and provide a high-quality finish. Thanks to its unique double-angled design, this flashing adapts to a wide range of roof pitches, allowing any installer to integrate it easily into their roofing system.

The foam gaskets, featuring a unique, patented and registered design, help to create a perfect seal on the Corrapol® sheets below, whilst adapting to any pitch, ensuring strong waterproofing across the top of the roof. Like our other innovative aluminium components, the Corrapol® Top Wall Flashing is manufactured to match the colours of the Corrapol®-BT sheets in vibrant red, green, black and brown.



This illustration of the Corrapol® Top Wall Flashing indicates how the flat vertical angle is fixed directly onto the wall and made waterproof by applying Securbond® Silicone LMN Sealant to the back angled edge.



Mill



White

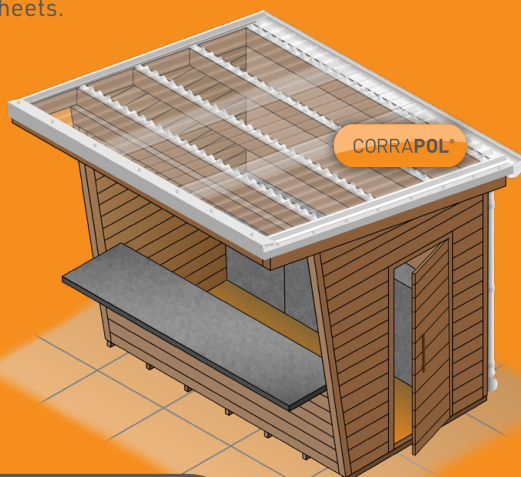


Corrapol®: Top Wall Flashing	Code
Corrapol® Top Wall Flashing - Mill - 2m	AC620M
Corrapol® Top Wall Flashing - Mill - 3m	AC622M
Corrapol® Top Wall Flashing - Mill - 6m	AC628M
Corrapol® Top Wall Flashing - White - 2m	AC620WH
Corrapol® Top Wall Flashing - White - 3m	AC622WH
Corrapol® Top Wall Flashing - White - 6m	AC628WH

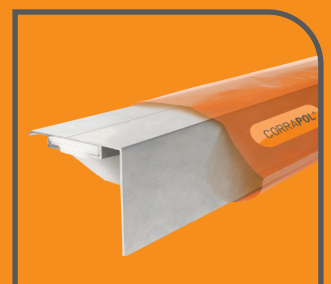
Corrapol® : Pent Roof Flashing

Our Corrapol® Pent Flashing is designed to create a watertight and robust seal on the upper edge of a corrugated pent roof.

Produced from quality aluminium, the pent roof flashing has been created to provide a long-lasting roof flashing solution. It is compatible with all our high profile Corrapol® clear corrugated sheets.



White



Mill

Corrapol®: Pent Roof Flashing	Code
Corrapol® Pent Roof Flashing - Mill - 2m	AC640M
Corrapol® Pent Roof Flashing - Mill - 3m	AC642M
Corrapol® Pent Roof Flashing - Mill - 6m	AC648M
Corrapol® Pent Roof Flashing - White - 2m	AC640WH
Corrapol® Pent Roof Flashing - White - 3m	AC642WH
Corrapol® Pent Roof Flashing - White - 6m	AC648WH

Corrapol® : Eaves Fillers

Corrapol® Foam Eaves Fillers are manufactured from a flexible foam allowing successful sealing and draught proofing.

The Corrapol® Foam Eaves Filler is made with closed-cell foam so does not absorb moisture and can also be used to further improve waterproof sealing.

Corrapol®: High Profile Eaves Filler	Code
Corrugated High Profile Foam Eaves Filler	AC42



High-Profile Eaves Filler

Corrapol®: Low Profile Eaves Filler	Code
Corrugated Low Profile Foam Eaves Filler	AC40



Low-Profile Eaves Filler

Corrapol® : Superior Flexible Fixings

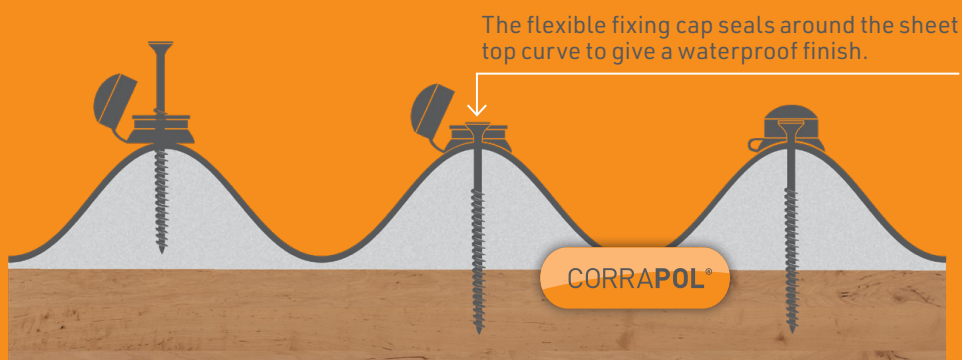
The high-quality Corrapol® flexible fixings provide enhanced sealing to the contours of the curved peaks of the Corrapol® Stormproof sheets. Being a screw fixing they also enable the installer to control the fixing pressure, and allow removal of the fixings if needed.

The caps are clear to provide an attractive finish to the roof and can be used with either the white or mill finished Corrapol® Rock N Lock Gable Flashing and Corrapol® aluminium super ridge.

Corrapol®: Superior Flexible Fixing	Code
Corrapol® Clear Flexible Fixings	AC32




Clear Corrapol® Fixing Button



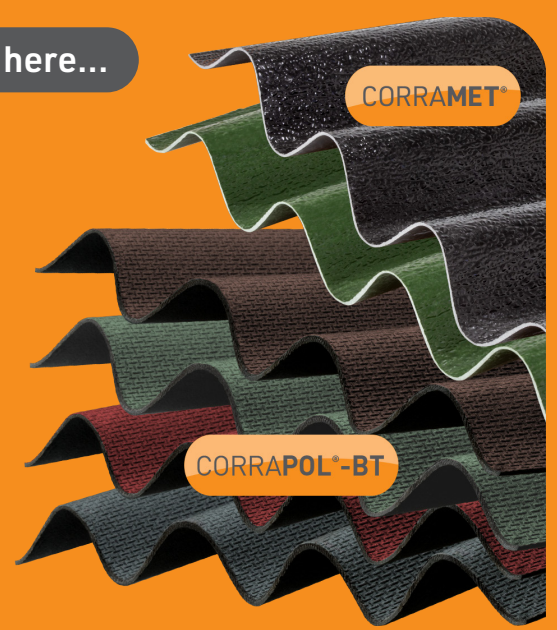
Corrapol® : Product Range Selection Guide

This Corrapol® product range guide provides a quick overview of the different properties of the Corrapol® and Corrapol®-BT ranges, enabling you to quickly identify the product best suited to your project.

	CORRAPOL® STORMPROOF	CORRAPOL®-PVC	CORRAPOL®-GRP
 LONG LIFE SPAN	✓✓✓✓	✓	✓
 IMPACT RESISTANT	✓✓✓	✓	✓✓
 UV PROTECTED	✓✓✓✓	✓	✓
 HIGH STRENGTH	✓✓✓	✓	✓
 LIGHT TRANSMISSION	✓✓✓✓	✓✓	✓
 LIGHTWEIGHT / EASY-TO-CUT	✓✓✓	✓	✓
 LOW COST	✓	✓✓✓	✓✓
 RIGID	✓✓	✓	✓✓✓
 PROVIDES PRIVACY	✓	✓	✓✓

Looking for Solid Colour Corrugated Sheeting?

 [View our Corramet® and Corrapol®-BT ranges here...](#)



Corrapol® Stormproof® : Technical Data

The value and quality of a building material are determined by the standards which it complies. The tables below list the stringent international standards Corrapol® Stormproof® is must meet, including excellent fire-resistant properties. The Corrapol® Stormproof® resin has a softening point of over 120°C.

Most extruded in polycarbonate products tested to BS476 Part 7 achieve a Class 1(Y) rating. The international results shown in the tables below demonstrate the high rating achieved by Corrapol® Stormproof® on a global scale. Corrapol® Stormproof® is less flammable and has a higher melting point than fiberglass, acrylic or PVC sheets.

Flammability and Building Standards

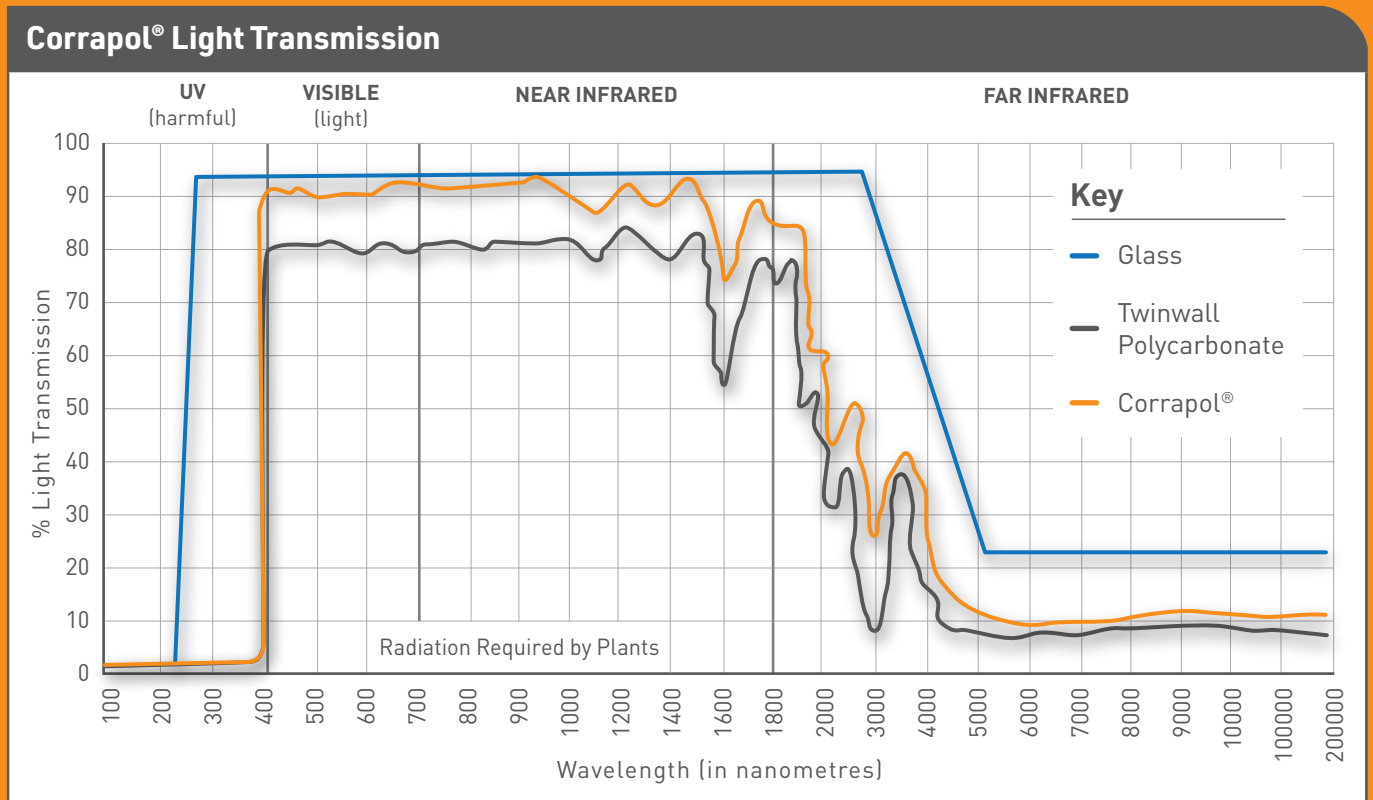
Standard	Country	Corrapol® Thickness	Method	Designation or Rating
Flammability	France	0.8-1.0mm	NFP 92501 NFP 92504 NFP 92505	M-1
Flammability	Germany	0.8-1.0mm	DIN 4102	B-1
Flammability	Israel	0.8mm	I.S. 755	V 2 2
Flammability	Dade County Florida, USA	0.8mm	ASTM D-1929	Meeting the South Florida Building Code 806°F
			D-1929	1004°F
			D-635	45 Sec
			D-635	1.77 in
			E-84	6
			E-84	78
			D-638	(weathering)
Flammability	USA	0.8mm	UL: UL723	4.7 47.0
			ASTM D-1929	490°C @ 4:3min 530°C @ 2:15min
			ASTM D-635	3.0 cm/min 30(Burning rate)
Flammability	USA Los Angeles	0.8mm	Los Angeles Building Code	CC2 (Section 2603)
Hurricane Code	Dade County Florida, USA		AS2376-1980	Passed
Wind Load	Australia			Complies
Cyclonic Wind Load	Australia		AS 2424	Passed
Sandbag Impact testing	Australia		AS2424, AS 1562-3	Passed
TNO Hail Test	Netherlands		1999-CON-LBC/ B7139/ JNE	Passed
TNO Load Test (Pressure)	Netherlands		1999-CON-LBC/ B7157/ JNE	Passed

Typical Properties

W	Property	Conditions	ASTM Method	Units-SI	Value	
Physical	Density		D-1505	g/CM ³	1.2	
	Water absorption	24hr.@23°C	D-570	%	0.15	
Mechanical	Tensile strength at yield	10mm/min	D-638	MPa	62	
	Tensile strength at break	10mm/min	D-638	MPa	65	
	Elongation at yield	10mm/min	D-638	%	7	
	Elongation at break	10mm/min	D-638	%	>80	
	Tensile modulus of elasticity	10mm/min	D-638	MPa	2,300	
	Flexural modulus	1.3mm/min	D-790	MPa	1,890	
	Flexural strength at yield	1.3mm/min	D-790	MPa	93	
	Notch impact strength izod	23°C	D-256	J/m	800	
	Notch impact strength	23°C	D-256	J/m	800	
	Impact falling weight		ISO-663/1 ^a	J	50	
	Rockwell hardness		D-785	R scale	118	
	Thermal	Long term service temperature			°C	-50 to +100
		Short term service temperature			°C	-50 to +120
Heat deflection temperature		Load: 1.82 MPa	D-648	°C	135	
Vicat softening temperature		Load: 1kg	D-1525	°C	150	
Co-efficient of linear thermal expansion			D-696	10 ⁻⁵ cm/cm°C	6.5	
Thermal conductivity			C-177	W/m K	0.21	
Optical	Specific heat capacity		C-351	kJ/kg K	1.3	
	Haze		D-1003	%	<0.5	
	Light transmission		D-1003	%	90	
	Refractive index		D-542		1.57	
	Yellowness index		D-1925		<1	
Electrical	Dielectric constant	1kHz	D-150		2.6	
		1MHz	D-150		2.4	
	Dissipation factor	1kHz	D-150		0.005	
		1MHz	D-150		0.02	
	Dielectric strength short time	500 V/s	D-149	kV/mm	20	
	Surface resistance	Ketley	D-257	0hm	4.1x10 ¹⁵	
Volume resistance	Ketley	D-257	0hm-cm	1.7x10 ¹⁷		

Corrapol® Stormproof® : Light Transmission

Corrapol® Stormproof® almost totally blocks harmful UV radiation whilst still allowing exceptional levels of visible light transmission. The graph below shows comparisons with other products.





View our other product ranges here...



WARNING : REGISTERED DESIGNS & PATENTS

The IP of the designs in this brochure are protected by internationally registered design rights. Many products are also protected with active or pending Patents. Clear Amber will not hesitate to take appropriate legal action if its rights in this respect are infringed.

© Copyright – Clear Amber Group Ltd - 2026. No part of this publication may be copied, reproduced, scanned, or stored in any electronic database, whether in whole or in part, in any form or by any means, without permission in writing from Clear Amber. Clear Amber will not hesitate to take appropriate legal action if its rights in this respect are infringed.

Inasmuch as Clear Amber have no control over the circumstances in which our material may be used, or site specific parameters, we cannot guarantee that any particular results will be achieved. Users should carry out their own tests to determine the suitability of the material for their application.