

ALUFLOW®

Sustainable Affordable Quality Aluminium Guttering System Installation Guide



ALUFLOW®

Patented and Registered Design

clearamber
roofing systems: designed • manufactured • delivered direct

Your Aluflow® System:

Congratulation on choosing the Aluflow® Gutter and Downpipe System - the most **sustainable, affordable, quality gutter system** available on the market.

These installation instructions guide you through each step with detailed illustrations showing the best installation practices for Aluflow®.

We Are Here To Support You:

We understand that even with comprehensive installation instructions, you may sometimes have questions that you cannot find the answers to. That's why we are here to help you throughout the process. Visit **clearambershop.com** and contact our support teams via **live chat, telephone** or **email**. They will be happy to answer any questions you may have.

 [Shop our Aluflow® Guttering range here...](#)

Contents:

Aluflow® Products	3-4
Plan the Position of the Aluflow® Running Outlet	5
Fit the Aluflow® Gutter Brackets	6
Fit the Aluflow® Running Outlet and first length of Aluflow® Gutter	6
Prepare the Aluflow® Gutter Unions	7
Apply the Securbond® Sealant	7
Join the Aluflow® Running Outlet and the Aluflow® Gutter	8
Install the Aluflow® Gutter Union	8-9
Install the Aluflow® Stop End	9
Install the Aluflow® Internal and External Corners Angles	9
Install the Aluflow® Gutter Leaf Guard	9
Aluflow® Downpipe Installation	10

Aluflow® : Products

Below is a list of the main Aluflow® gutter parts available.

IMPORTANT NOTE:



As with all aluminium products it is important to always use **STAINLESS STEEL FIXINGS**.

Aluflow® Top Hung Gutter Bracket (adjustable)

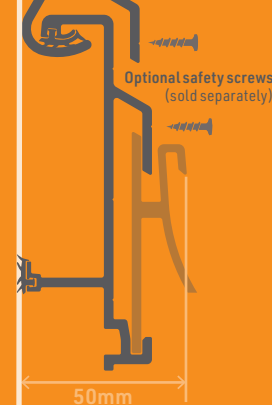
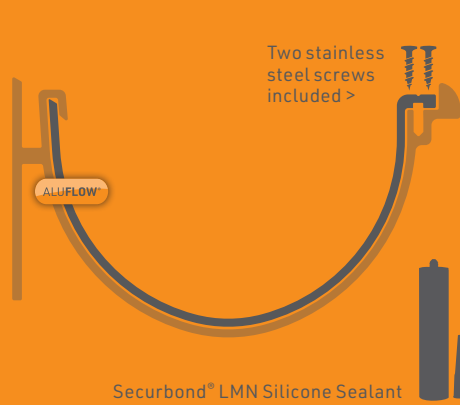
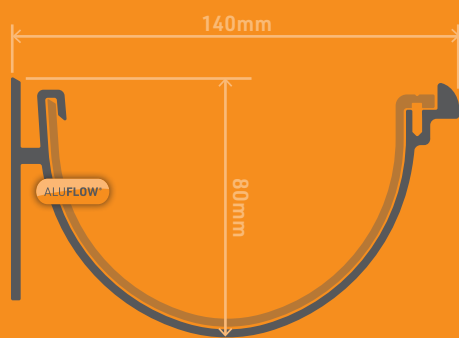
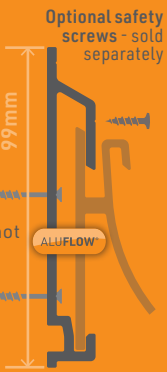
Fixings not included

Roof edge

Aluflow® Gutter Bracket - Rock N Lock®

Aluflow® Gutter

Aluflow® Gutter Union

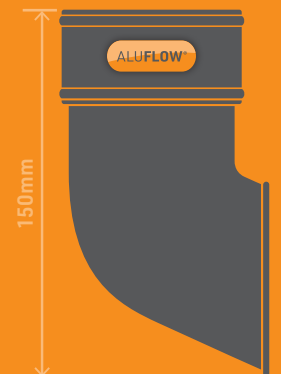
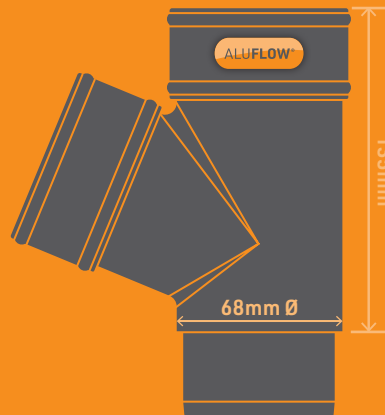
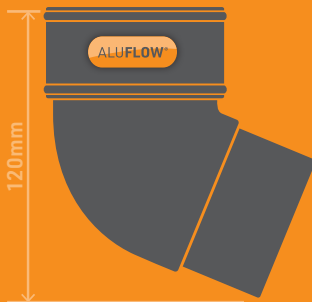


Aluflow® Downpipe Offset Bend - 112°

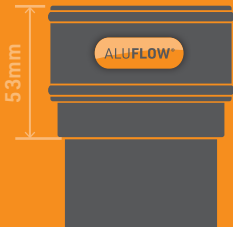
Aluflow® Downpipe

Aluflow® Downpipe Y Branch

Aluflow® Downpipe Shoe

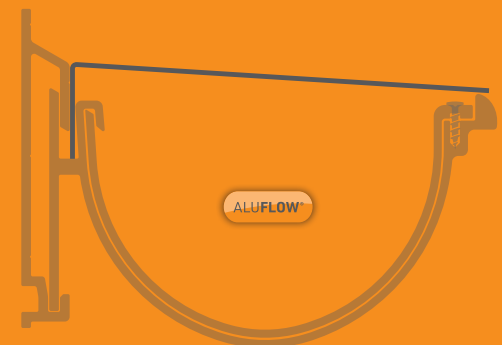
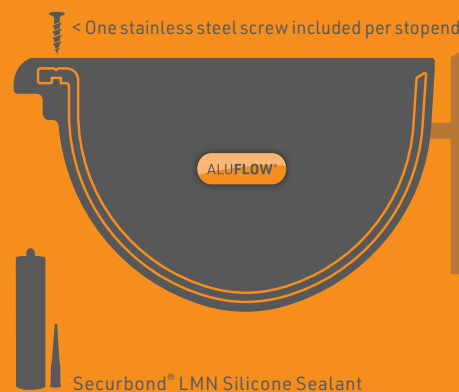


Aluflow® Downpipe Connector

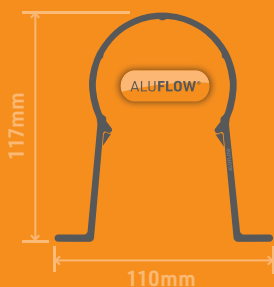


Aluflow® Gutter Stop End (Left and Right)

Aluflow® Gutter Leaf Guard

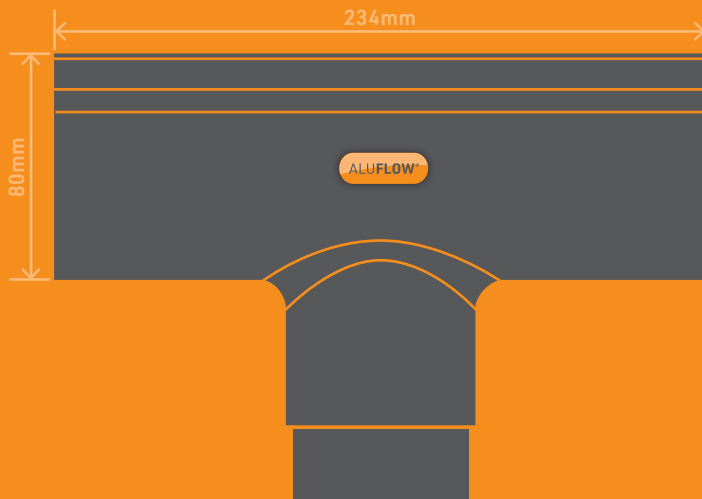


Aluflow® Downpipe Bracket



Aluflow® : Products (continued)

Aluflow® Gutter Running Outlet



Aluflow® Downpipe Hopper



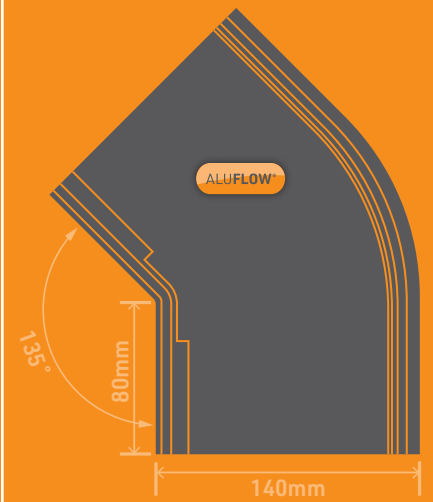
Aluflow® 90° Internal Gutter Angle



Aluflow® 90° External Gutter Angle



Aluflow® 135° External Gutter Angle



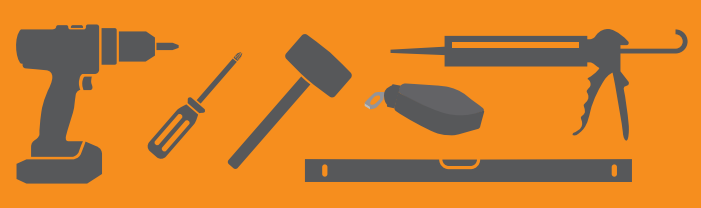
Tools Required



Wear protective gloves, glasses and ear protectors where appropriate.



Tape measure and fine tooth blade chop saw



Cordless screwdriver/drill bits, Phillips headed screwdriver, soft rubber mallet, a straight edge tool, a chalk line, a knife and a sealant gun loaded with Securbond® Silicone LMN sealant.

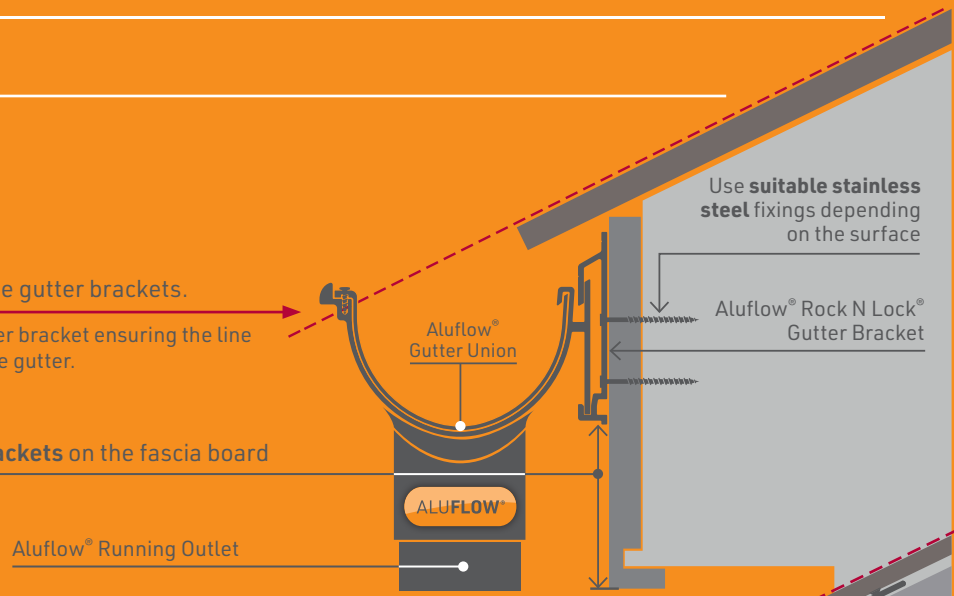
IMPORTANT – Please ensure you take necessary safety precautions and checks before working at a height.

Aluflow® Installation

1 **START** with the running outlet.

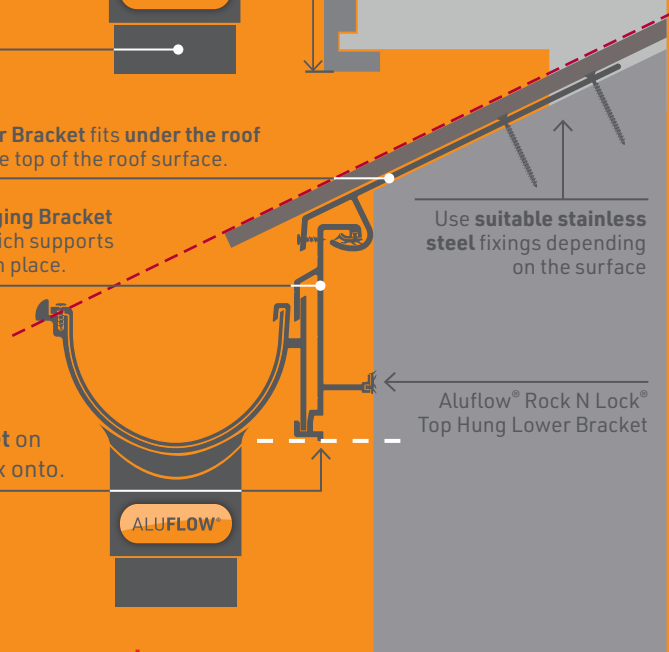
2 **CHOOSING** the correct level for the gutter brackets.
Choose the correct level for your gutter bracket ensuring the line of the rain water flows straight into the gutter.

3 **MARK** the height of the **Gutter Brackets** on the fascia board



The **Aluflow® Top Hung Gutter Bracket** fits under the roof tiles/sheets and fixes onto the top of the roof surface.

The lower **Rock N Lock® Hanging Bracket** sits vertically on the hook which supports the **Aluflow® Gutter** lengths in place.

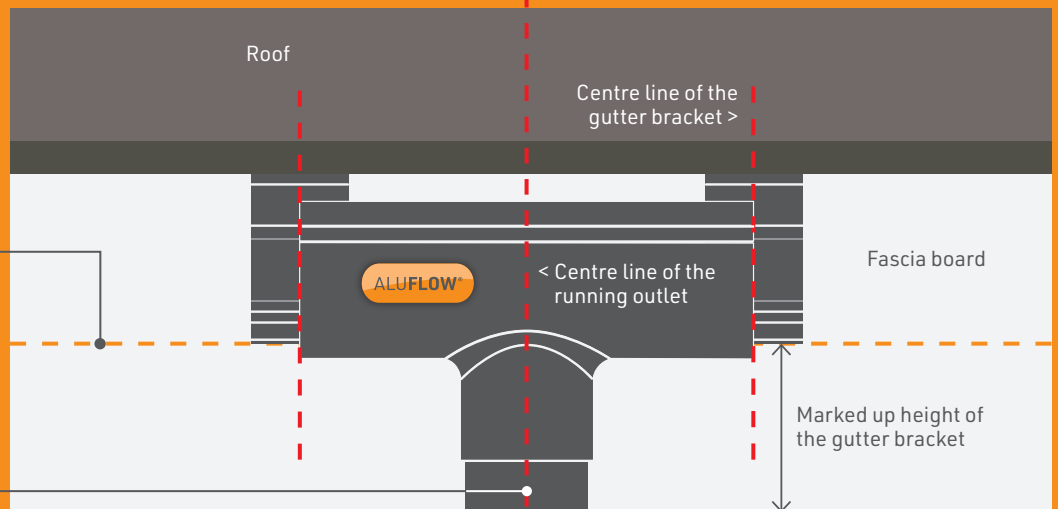


4 **MARK** the height of the **Aluflow® Gutter Top Hung Bracket Set** on the wall/fixing surface that does not have a fascia board to fix onto.

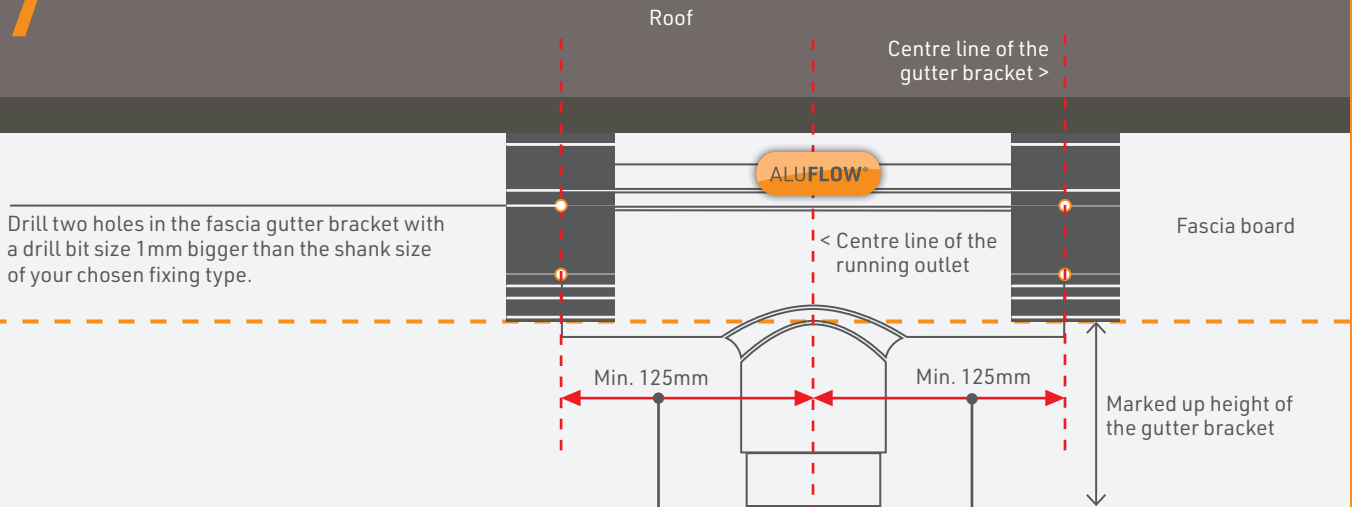
▶ Video : How 2 Install Aluminium Guttering

5 Run a stringline/ chalk line from the height mark to create a level line in both directions

6 Decide where your running outlet is going and mark the centre point from the opening of the outlet



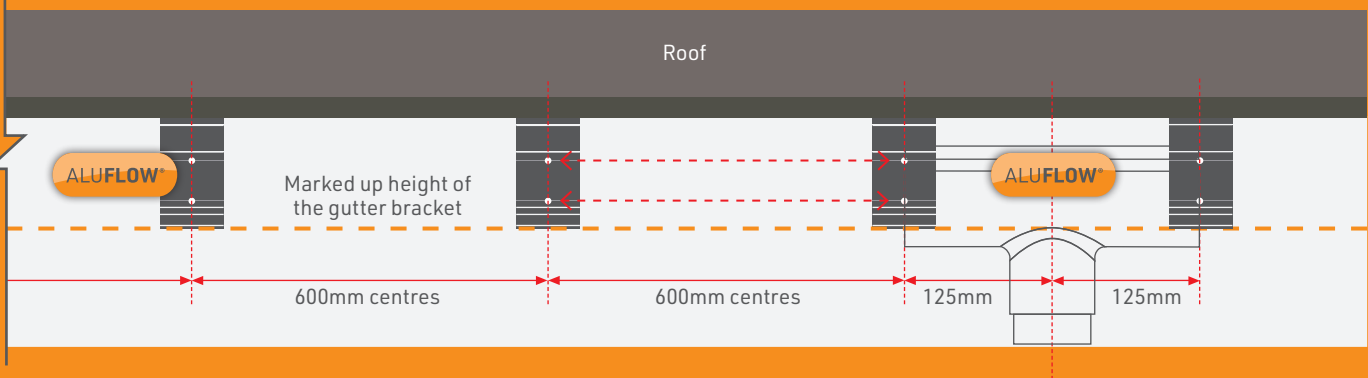
7



8 Measure 125mm from the centre of the running outlet centre line in both directions and install the first gutter brackets.

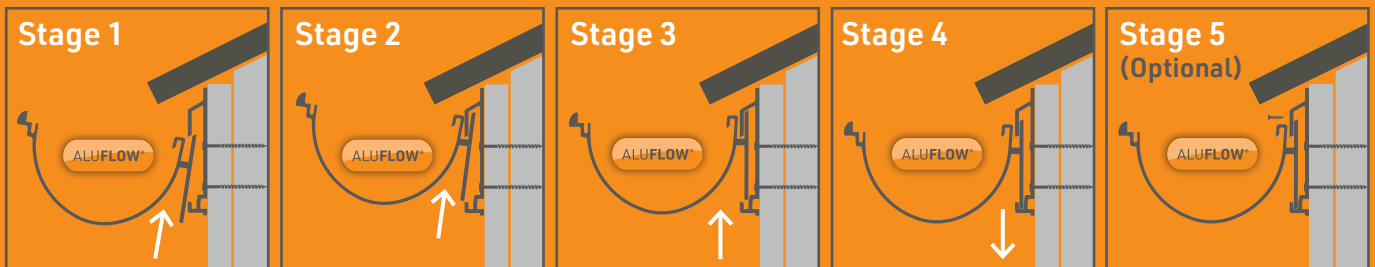
9

Securely fix the intermediate gutter brackets using STAINLESS STEEL FIXINGS at 600mm centres along the line.



10

Rock N Lock® the Running Outlet and first length of Gutter onto the Gutter Brackets



Stage 1
Tilt the Aluflow® Gutter forward and slide the rear plate into the upper hook of the Aluflow® Gutter Bracket.

Stage 2
Lift the Aluflow® Gutter up into the bracket to pass it over the lower hook of the Aluflow® Gutter Bracket.

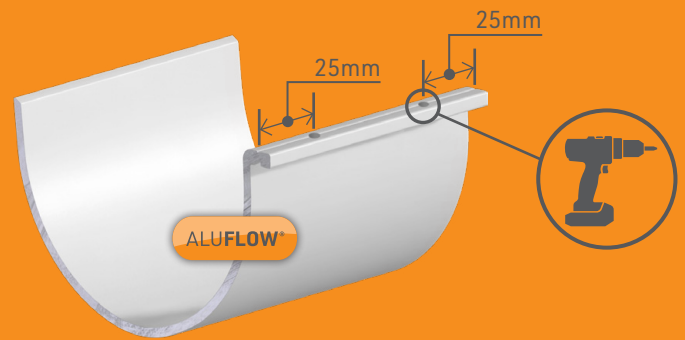
Stage 3
Straighten the front edge of the Aluflow® Gutter to level the rear plate directly above the lower channel of the Aluflow® Gutter Bracket.

Stage 4
Lower the Aluflow® Gutter down to lock it into the Aluflow® Rock N Lock® Gutter Bracket.

Stage 5 (Optional)
Drill a 3.5mm hole at the top of Aluflow® Rock N Lock® Gutter Bracket, at the point indicated by the small groove, and screw in the optional safety screw.

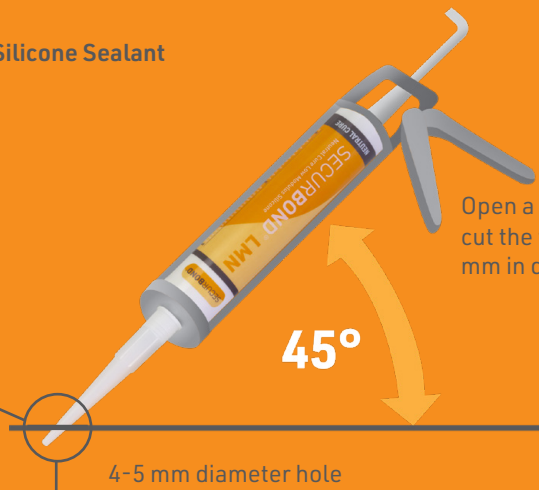
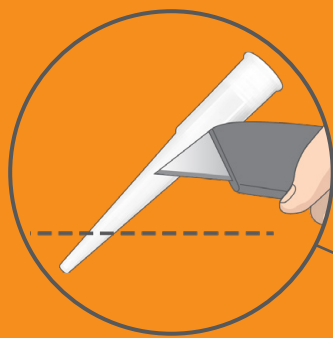
11 PREPARE the Aluflow® Gutter Union for installation

Take the Aluflow® Gutter Union, measure 25mm from each end along the screw fixing line and drill a hole with a 3.5mm drill bit at these points.



▶ Video : How 2 Join an Aluminium Gutter

12 PREPARE the Securbond® Silicone Sealant prior to installation

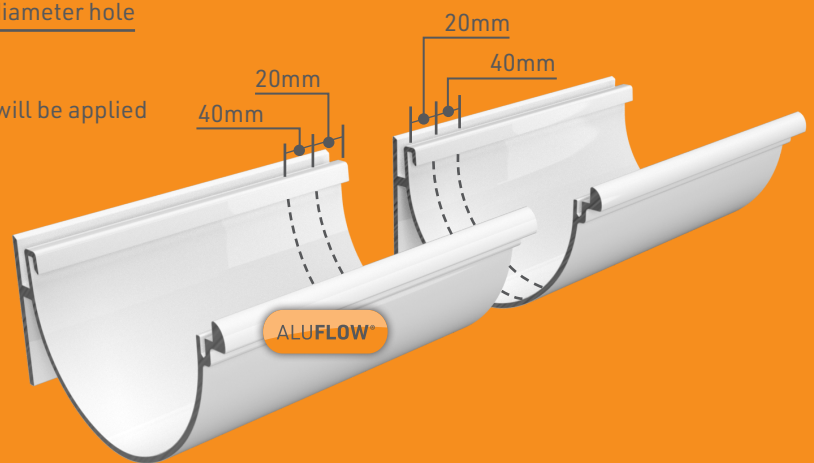


Open a tube of Securbond® silicone sealant and cut the tip at a 45° angle to create a hole 4 to 5 mm in diameter, then insert it into silicone gun.

13 MEASURE the POSITION where the SEALANT will be applied

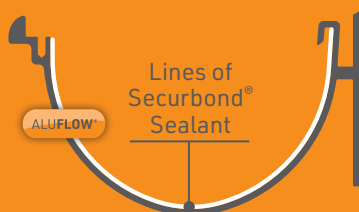
Ensure the internal surface of the gutter is free from dirt, swarf and that it is dry.

Measure the back and front edges of the gutter approximately 20mm and 40mm from the end of the gutter or fitting.



14 Apply the Securbond® Silicone Sealant to the Aluflow® Gutter and Joints

Run two fine beads of Securbond® Silicone around the inside surface of the gutter from the front to the back. Make sure there are no gaps in the silicone bead from front to back of the internal surface of the gutter. Repeat the procedure on the adjoining running outlet.

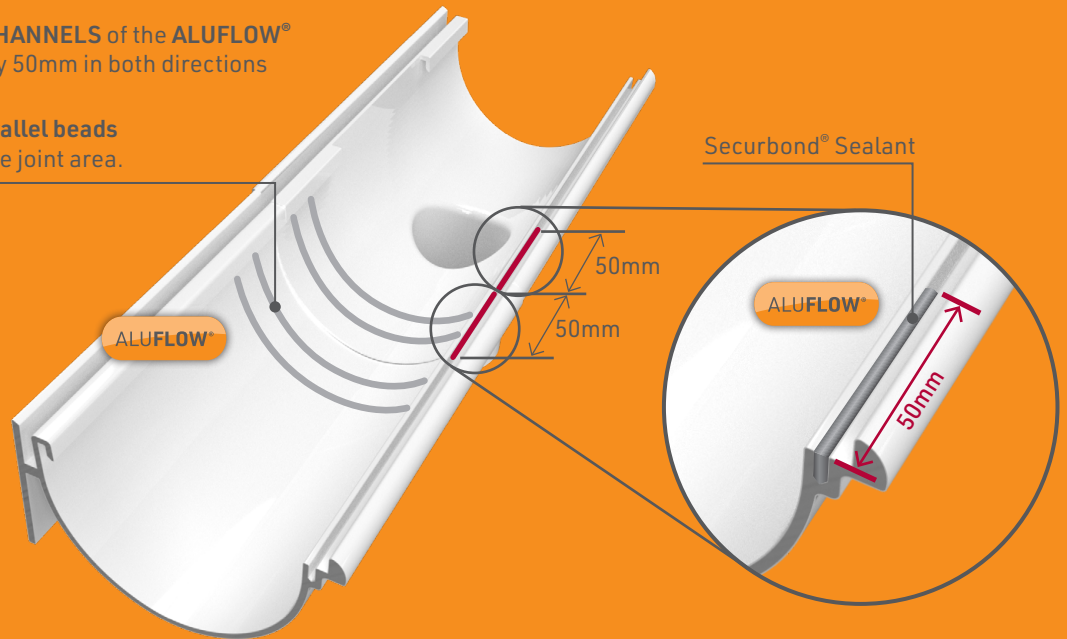


15 Make sure the **GUTTER LENGTH** and **RUNNING OUTLET** are butted tightly together

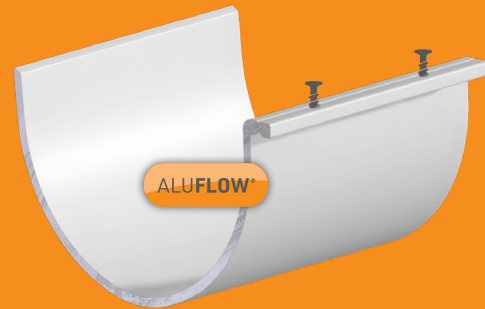


16 SEAL the **FIXING CHANNELS** of the ALUFLOW® GUTTER/JOINTS by 50mm in both directions

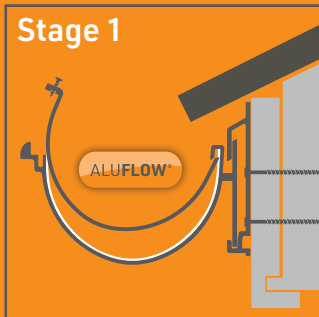
You should now have four parallel beads of sealant on either side of the joint area.



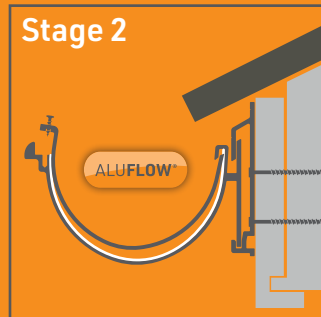
17 Take **TWO SMALL SCREWS** and thread them partially through the holes in the Aluflow® Gutter Union - ensure the union is clean and dry.



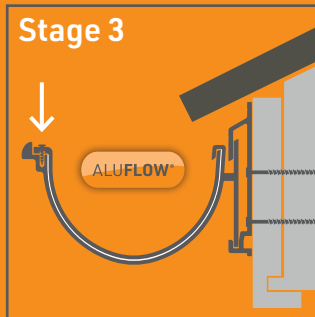
18 Lower and fit the Aluflow® Gutter Union into place



Lower the far edge of the gutter union (the far side from the screws) and hook it into the back slot of the gutter hook.



Lower the far edge downwards to press it into the silicone.



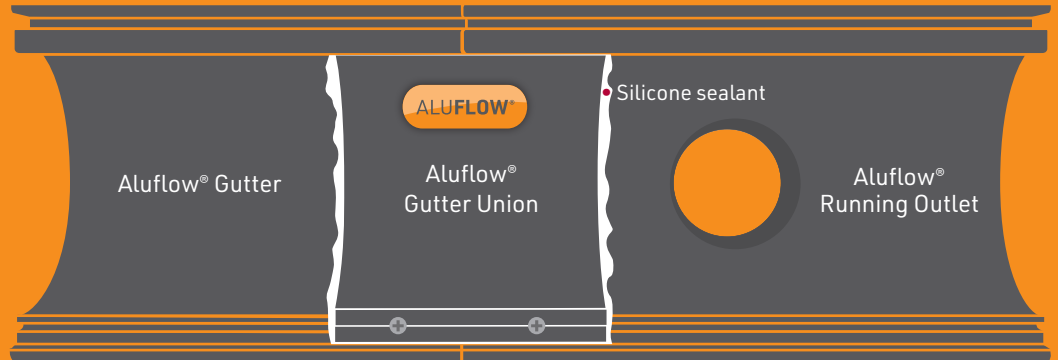
Push down and screw the two screws in to both sides of the gutter union until firmly fixed.

18

Lower and fit the Aluflow® Gutter Union into place (continued)

Your silicone beads should ooze out of either side of the union.

Leave excess silicone as it is for now, for any silicone on the underside allow it to dry then cut off 24 hours later.



19

Install the remaining Aluflow® Guttering, Joints and Stop Ends

IMPORTANT – Cut the lengths of the gutter accurately to fit between any corners and running outlet positions.

Continue installing Aluflow® Gutter lengths in the same way until you reach the end of the gutter, then install the Aluflow® Stop End at the end of the last gutter section.

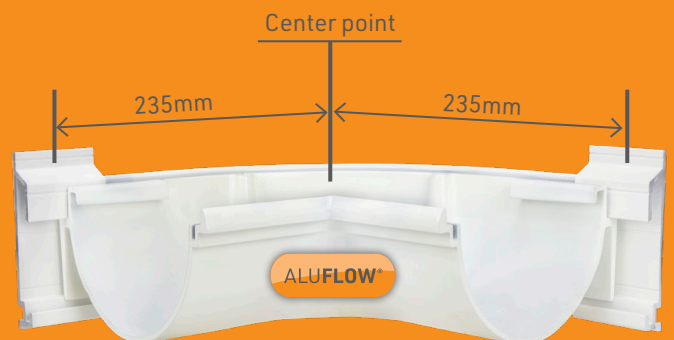
The Aluflow® Stop End is installed the same way as the Aluflow® Gutter Union, see step 17.



20

Installation of the Aluflow® 90° Internal Corner Angle

Fix the first bracket 235 mm from the corner, centred on the bracket in both directions. Fix the inner corner into the two brackets now in place using the Rock N Lock® system.



21

Installation of the Aluflow® 90° and 135° External Corner Angle

Attach the first bracket 80 mm from the corner, centred on the bracket in both directions. Secure the outer corner using the Rock N Lock® system in both installed brackets.

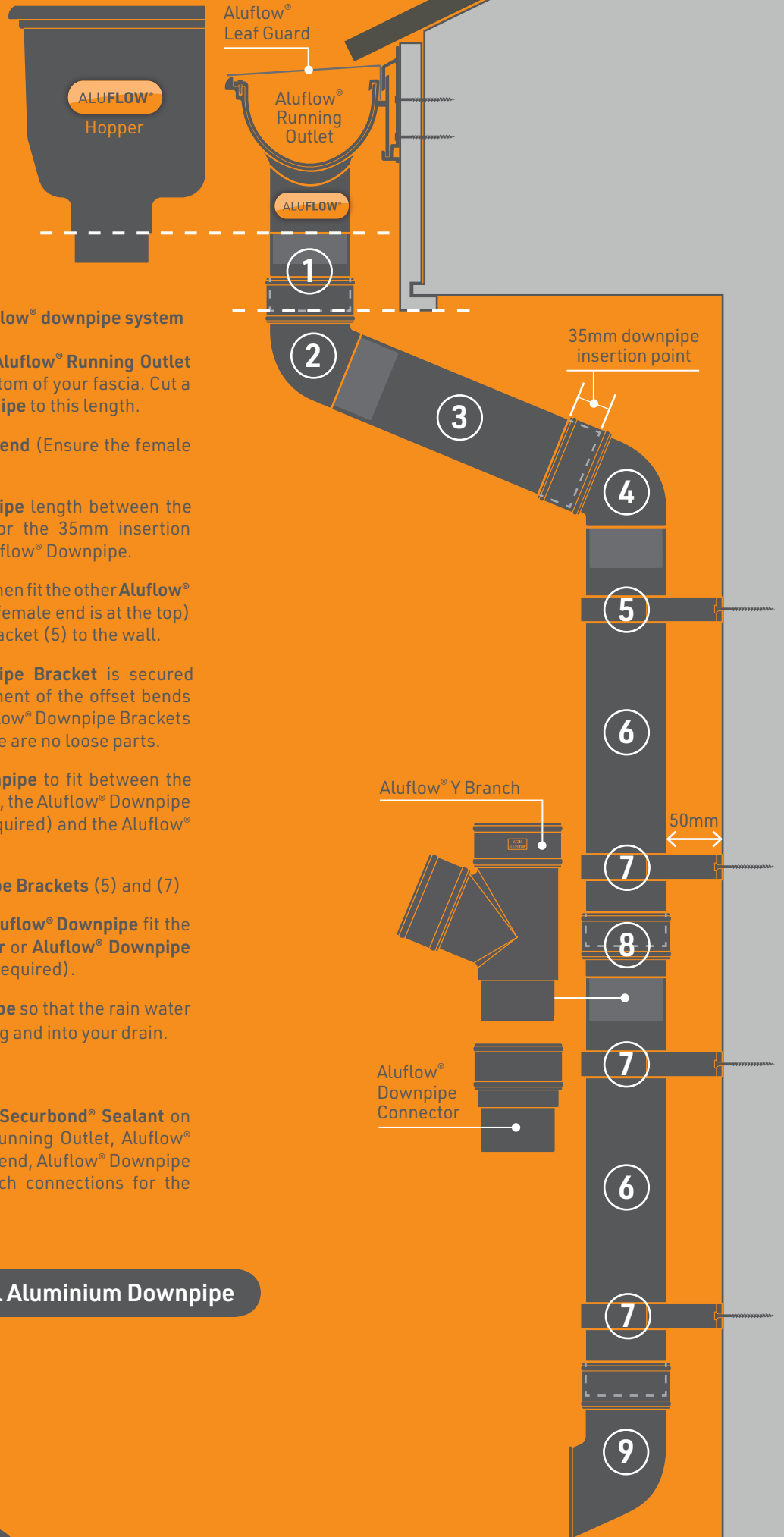


22

Installation of the Aluflow® Gutter Leaf Guard

The Aluflow® Gutter Leaf Guard comes in 1m lengths and prevents the build up of leaves and dirt accumulating in the gutter.





23 Installation of the Aluflow® downpipe system

- 1 Measure from the top of the **Aluflow® Running Outlet pipe slot pipe** down to the bottom of your fascia. Cut a small piece of **Aluflow® Downpipe** to this length.
- 2 Fix the **Aluflow® 112° Offset Bend** (Ensure the female end is at the top).
- 3 Measure the **Aluflow® Downpipe** length between the two offset bends allowing for the 35mm insertion section at either end of the **Aluflow® Downpipe**.
- 4 Follow the angle through and then fit the other **Aluflow® 112° Offset Bend** (Ensure the female end is at the top) with an **Aluflow® Downpipe Bracket** (5) to the wall.
- 5 Ensure the **Aluflow® Downpipe Bracket** is secured firmly, preventing any movement of the offset bends or pipe pieces. Additional **Aluflow® Downpipe Brackets** should be used to ensure there are no loose parts.
- 6 Cut a piece of **Aluflow® Downpipe** to fit between the lower **Aluflow® Offset Bend** (4), the **Aluflow® Downpipe Connector/Y Branch** (8) (if required) and the **Aluflow® Downpipe Shoe** (9).
- 7 Secure with **Aluflow® Downpipe Brackets** (5) and (7)
- 8 To extend the length of the **Aluflow® Downpipe** fit the **Aluflow® Downpipe Connector** or **Aluflow® Downpipe Y Branch** between lengths (if required).
- 9 Fix the **Aluflow® Downpipe Shoe** so that the rain water deflects away from the building and into your drain.

Points 1, 2, 4, 8 and 9

It is recommended that you use **Securbond® Sealant** on the **Aluflow® Hopper**, **Aluflow® Running Outlet**, **Aluflow® Downpipe**, **Aluflow® 112° Offset Bend**, **Aluflow® Downpipe Connector** and **Aluflow® Y Branch** connections for the perfect seal.

 **Video : How 2 Install Aluminium Downpipe**

Aluflow® Disclaimer:

Aluflow® products are powder coated to closely matched RAL codes within industry accepted tolerances. However please note that the varying manufacturing processes of different items such as the substrates, application methods and paint conditions can lead to slight variations in colour and satin-level finish. Additionally, the finished colours may differ from batch-to-batch. Therefore, there may be shading and satin-level differences between different components which is an accepted phenomenon. Aluflow® has an estimated lifespan of 60 years as it is made from aluminium and therefore should retain structural and functional integrity. However, the longevity of the powder coating and colour shade or satin-level finish level of the powder coating is excepted from this longevity estimate. All endeavours are made when manufacturing to provide the longest lasting gutter system possible.

WARNING : REGISTERED DESIGNS & PATENTS

The IP of the designs in this brochure are protected by internationally registered design rights. Many products are also protected with active or pending Patents. Clear Amber will not hesitate to take appropriate legal action if its rights in this respect are infringed.

© Copyright – Clear Amber Group Ltd – 2026. No part of this publication may be copied, reproduced, scanned, or stored in any electronic database, whether in whole or in part, in any form or by any means, without permission in writing from Clear Amber. Clear Amber will not hesitate to take appropriate legal action if its rights in this respect are infringed.

Inasmuch as Clear Amber have no control over the circumstances in which our material may be used, or site specific parameters, we cannot guarantee that any particular results will be achieved.

Users should carry out their own tests to determine the suitability of the material for their application. Installers should satisfy themselves that published permissible loadings and spacings for the Aluflow® guttering system, together with any supporting posts, frames, or walls and fixings, are sufficient to provide adequate strength for the intended use and to meet regional loading requirements. Installers should also obtain their own job-specific structural engineer's report for their individual site. Samples are readily available to users to test and verify the exact sizes according to their site requirements.